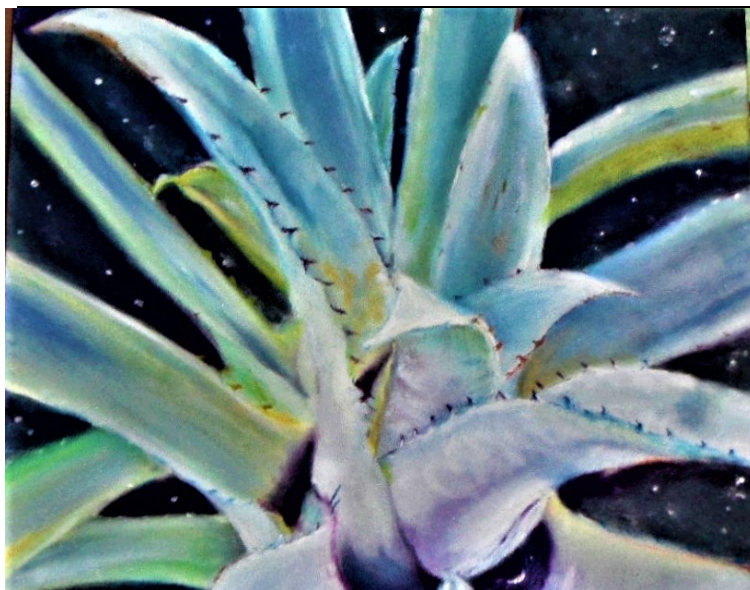


Bromeliad Society
HOUSTON  **Inc.**

Vol 53 No 8

AUGUST ANNOUNCEMENTS

August 2020



Hohenbergia leopoldo horstii 'It's Full of Stars'
- Earthstar Designs

MEETING DATE: Tuesday, August 18, 2020
TIME: 7:00 P.M. to .

PROGRAM SPEAKER: Gordon Stowe and Frank Lee: "Greenhouse Structures"

MEETING AGENDA:

- Login to Zoom and Social Time at 7:00 to 7:30
- Welcome and Announcement
- Program – Greenhouse Structures by Gordon Stowe and Frank Lee
- Show and Tell presented by John Schmidt

SEPTEMBER PROGRAM: Zoom by Paul Isley on *Tillandsias*

NEXT BOARD MEETING: November 19, 2020
(More information to come as on Zoom address.)

The Zoom Meeting on August 18
7:00 to...

If you are not familiar with Zoom, please use this link to see how to access a Zoom meeting:

<https://support.zoom.us/hc/en-us/articles/201362193-Joining-a-Meeting>

Bromeliad Society Houston August Meeting
Time: Aug 18, 2020 07:00 PM Central Time
(US and Canada)

Join Zoom Meeting

<https://us02web.zoom.us/j/85975085186?pwd=ejdLdGFucjUyUWt2VG1DVmdMMnINUT09>

Meeting ID: 859 7508 5186

Passcode: 554633

One tap mobile

+16699006833,,85975085186#,,,,,0#,,554633#
US (San Jose)

+12532158782,,85975085186#,,,,,0#,,554633#
US (Tacoma)

Dial by your location

+1 669 900 6833 US (San Jose)

+1 253 215 8782 US (Tacoma)

+1 346 248 7799 US (Houston)

+1 312 626 6799 US (Chicago)

+1 929 205 6099 US (New York)

+1 301 715 8592 US (Germantown)

Meeting ID: 859 7508 5186

Passcode: 554633

Show and Tell

If you have plants you'd like to show,
please send .jpg photos to
mary@edmonsonphoto.com

PRESIDENT'S PAGE



Hello everyone. I hope you are all well. Unfortunately, things aren't looking any better here in Houston so we will once again be social distancing with a virtual meeting using the

Zoom software this month. We have had just shy of thirty members at each of our first two virtual meetings so I hope we will do a little better this time. It has been nice to have a few of our out of town members join us for these meetings. Now we would like the rest of you to join in as well.

As with last month, the link for joining the August 18th meeting is in the Bulletin. You will also receive an invitation from Mary Cinotto prior to the meeting that contains the link. Please try to be connected to Zoom between 7:00 PM and 7:30 PM for social time and to make sure we can start the meeting on time at 7:30 PM.

This month Linda Whipkey, VP of Programs, has arranged for us to have a program on Greenhouse Structures presented by Gordon Stowe and Frank Lee. Both Gordon and Frank have been involved with building various types of structures from simple to more complex and will share their experiences as well as show examples of structures belonging to many of our members. Thank you both for putting this together for us.

Like last month, John Schmidt with the help of Mary Cinotto will be presenting a Show and Tell discussion after the program. Please send pictures of any plants you would like to show / discuss / have identified to Mary Cinotto by August 10th. Thank you both for doing this for us.

I hope you all received the updated electronic membership directory from Mary Cinotto on August 3rd. Last month at our Board meeting the decision was made to change from the printed Yearbook once a year to an electronic directory to be emailed to members periodically during the year as changes occur. This will provide more up to date information to our members as well as eliminate the cost of printing and mailing especially with the current situation of no in-person meetings.

Don't forget the 2021 World Bromeliad Conference (WBC) in Sarasota, Florida is now scheduled for June 8-12, 2021. It will be held at the Hyatt Regency Sarasota with a trip to Selby Gardens and optional tours for purchase to Tropiflora and Michael's Bromeliads. There will be speakers, plant sales, plant show, rare plant auction, and a banquet. If you registered for the 2020 WBC, your registration will be transferred to the 2021 WBC. Should you prefer a refund, you may receive a full refund through the end of 2020 by contacting the Bromeliad Society International (BSI) Membership Secretary at membership@bsi.org. If you would like to register for the 2021 WBC, registration is \$315 per person through the end of 2020. You must be a BSI member to register. If you are a current BSI member, please register at <https://www.bsi.org/members/>. If you are not a member, you may join the BSI and register for the conference at <https://www.bsi.org/new/join-the-bsi-or-renew/>. You can now make hotel reservations for the 2021 WBC through the BSI website.

If you have not done so already, please renew your BS/H and Cryptanthus Society memberships. Allyn Pearlman (deliboys@comcast.net) would be happy to help you with this. Also, please go to <https://www.bsi.org/members/> to renew your membership for the BSI online or <https://www.bsi.org/new/join-the-bsi-or-renew/> to join the BSI online or to print a form to renew/join by mail. Don't forget there is a new electronic Journal membership option for only \$25 for individual memberships, \$35 for dual memberships. There is also a new low rate of \$15 for the first year for an electronic Journal membership for first time members, \$25 for first time dual memberships. Please let me know if you have any questions.

It's getting hot outside so please remember to stay hydrated when you are working on your bromeliads or in the garden. And if you are venturing away from your home, please take precautions, wear your masks and stay away from crowds if you can.

I hope to see you all August 18th at 7:30 PM on Zoom. Please be careful and stay healthy.

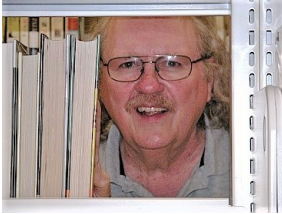
Take care,
Cherie

August's Program By Gordon Stowe and Frank Lee: Greenhouse Structures

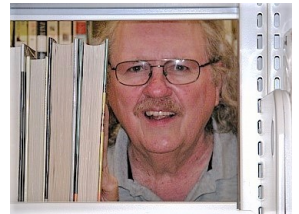
A tour of mostly BSI member greenhouses. Our mission is to provide an overview of different types of greenhouses from simple shade cloth covered frame, to highly automated greenhouse with controls for temperature, ventilation, sun control and rainwater harvesting. We want to provide an incentive to growers who are thinking about building greenhouses.

There will be examples of professionally contracted Greenhouses, Purchased Kits and Do It Yourself structures.

Gordon and Frank will discuss the features of each so that members can determine what is best suited for their situation.



Whipkey's Word August 2020 LABEL



Lately I have been busy cleaning up the greenhouse. I guess you could say that I am doing my spring cleaning in July. OK, I know that I am a little late in getting things done. I have been mixing potting mediums, propagating, cleaning, and repotting plants. It is always a good idea to check the collection and see what is thriving, what is just surviving, and what is already dead. Of course, I need to remove all those rotten benches and build new ones. Hopefully I can finish by October 1. That will give me 3 or 4 weeks to rest before I start getting plants moved in for the winter.

Once in a while, well to tell the truth more often than I would like to admit, I don't recognize a plant. This is a good time to look at my old friend the plant label. Every pot should have one. I think labels are so important that I think I will make label the word of the month.

In the general sense of the word I would define label as a small piece of paper, cloth, plastic, or similar material attached to an object that gives information about it.

My plant labels are made of plastic and about 5 or 6 inches long and 0.5 inches wide. I buy them in bulk on line at a reasonable price. Some write on the pot. Other people buy cheap plastic window blinds and cut up the slats to make their labels. Now I might erase the information on an old label and reuse it, but to make my own, way too much work.

When I started labeling my plants, I wrote the name of the plant on the label in "indelible" ink. I must say that was a disaster. How can ink be called indelible if the sun fades it into oblivion in a relatively short period of time? I soon found out that #2 pencil works just fine. It can be erased if a mistake is found, but does not fade in the hot Texas sun.

As I became more serious about my collecting, I realized that I needed to keep more information about each plant than I could fit on a reasonable sized label. I decided to write my information on 3x5 index cards, arrange the cards in alphabetical order by name, and store them in a little metal box. I decided to keep the following information about each plant:

- the correct name
- for a hybrid
 - the hybridizer
 - parentage
- cost (don't you just hate killing \$100 plants)
- source
- date obtained
- date potted
- mix used
- when fertilized
- comments such as
 - a description
 - BCR notes and number
 - sellers notes and stock number

I had only to place the name on the label, put the label into the pot with the plant and I was off to the races. Note cards worked great. Until the day I dropped the box. It took a while to get everything back into the correct order. As my collection grew, so did my number of little metal boxes. Something had to give. Technology to the rescue! In the late 1980s personal computers were becoming more common. As both Linda and I were teachers, I realized that computers were great for recordkeeping and constructing easily editable versions of teaching materials. Why not use one for my plant record keeping?

First, I tried a spreadsheet. OK, but not great. Not enough flexibility. I got tired of cutting and pasting to generate reports. Sometime in the late 1990s I discovered databases. I quickly migrated my spreadsheet information into an Access database. Now my labels contain two pieces of data, the correct name of the plant, and a unique accession number. The accession number links the label to the record in the database.

All was well in Rosehill. Well, almost. Remember the information I needed for the label? The accession number is easy, the correct name not so much so.

For example, last year I won a little *Neoregelia* on the BS/H raffle table. The label in the pot said 'Love Potion'. When I entered the information about my new treasure into my database, I look it up in the BCR online database. There it was. However, something was fishy. Figure 1 shows the photo that was submitted when Margaret Paterson registered the plant. Figure 2 shows a picture that I took of the plant that I won. I know that culture can make a big difference in how a plant looks. You can look at the pictures and make up your own mind, but I don't think the plants look anything alike. What is going on? Could the label be incorrect?

Figure 1



Neoregelia 'Love Potion' photo by Bill Paterson

Figure 2



Neoregelia 'Love Potion' photo by David Whipkey

My opinion is that someone mislabeled the plant. Sometimes it is as simple as putting the tag into the wrong pot. Or, mommy didn't have a tag and we make a guess as to what it was. In my case, bad choice as my memory is getting less and less reliable. When I can't identify a plant I usually turn to the internet. Problem is most anyone can put most anything on the internet. Many sites are not reliable. I have seen many incorrectly named plants on the internet. Once I found an *Aechmea fasciata* labeled as a *Neoregelia*. As I used to tell my students, trust but verify.

I have found these sites to contain fairly reliable information. Please note the underlined word.

BCR <http://registry.bsi.org/>

Bromeliads in Australia <http://www.bromeliad.org.au/>

Brom-L <http://florapix.nl/brom-l/>

Bromeliário Imperialis <https://imperialis.com.br/>

Dyckia Brazil http://dyckiabrazil.blogspot.com/2011/12/blog-post_4639.html

Florida Council of Bromeliad Societies: Bromeliad Photo Index <http://www.fcbs.org/pictures.htm>

If you are old school you might want to consider using the following books. Again, consider the reputation of the source.

Blooming Bromeliads by Ulrich and Ursula Baensch

Bromeliads by Francisco Oliva-Esteve

Tillandsia I and *Tillandsia II* by Paul T. Isley III

Bromeliads by Victoria Padilla

If you have other trusted sources, please email them to me. I am always looking for valid Bromeliad information sources. I have a few treasures in my collection that have labels that say things like *Neoregelia* 'Love Potion' ?? and I would love to remove the ??.

Happy labeling.

Bromeliad Society/Houston, Inc.
Minutes - Regular Meeting
July 21, 2020

Location: Zoom Meeting

Members were able to join the meeting at 7:00 am. Many did. They practiced using the Zoom features and worked on eliminating technical problems. There was also a fair amount of visiting.

Call to order: President Cherie Lee at 7:33 pm

Plant Sale: None

Visitors: None

New Members: None

Attendance: 24+ (24 connections some were multiple (Frank and Cherie Lee, Gordon and Shirl Stowe, Rick and Carole Richtmyer, and John Edmonson and Mary Cinotto)

Announcements & Committee Reports:

Cherie Lee said that:

the Society will be continuing with Zoom meetings for at least the remainder of 2020. she wanted to thank Linda Whipkey for working so hard on arranging programs for our meetings.

she wanted to thank all the people who worked on the July program.

you should contact Linda Whipkey if you had an a program that you would like to see.

she wanted to thank John Schmidt and Mary Cinotto for working so hard on the "Show and Tell" segment for the July program.

she said that elections will be coming up shortly and our Past President, Don Green, was in charge of the nominating committee. If you would be willing to serve as an officer or a board member, please contact one of the committee members. The committee will consist of:

Ruby Adams

Alicia Baker

Ken Gardner

Malcolm McCorquodale III

she also thanked Gordon and Shirl Stowe who will be leaving the board in December for their 3 years of service.

Linda Whipkey gave a short rundown of future programs:

August – Gordon Stowe will present a program on greenhouses and other structures for sheltering and growing plants

September – Paul Isley will present a program on Tillandsias

October – open, suggestions would be more than welcome

November – open, suggestions would be more than welcome

Treasurer's report: none

Program:

Linda Whipkey introduced our speaker, David Whipkey, who presented a program developed for the BSI by Herb Plever titled **Genus Aechmea: Species and Cultivars in Popular Cultivation.**

Bromeliad Society/Houston, Inc.
Minutes - Regular Meeting
July 21, 2020
Page 2

Show & Tell: Mary Cinotto presented the pictures of the plants and John Schmidt talked about them. The plant photos were provided by:

- David Whipkey
- John Edmonson
- Mary Cinotto
- Michael O'Neal
- Alicia Baker
- John Schmidt
- R. L. Frasier
- Theresa Sandberg
- Barbara Szymczak
- Billie Emanuel

Adjournment: A motion to adjourn was made by Shirl Stowe and seconded by Alicia Baker. The meeting was adjourned at 9:28pm.

Plant Raffle: There was none

AUGUST BIRTHDAYS

Joe Sandel	8/5
Scherie Townes	8/13
Gordon Rowell	8/17
Kim Merchant	8/20
Troy Merchant	8/24
Joanne Woolsey	8/24
Charlien Rose	8/31



SEPTEMBER BIRTHDAYS

Tommy Emanuel	9/3
John Schmidt	9/5
Clint Martin	9/8
Kathy Stahl	9/11
Noreen Tolman	9/12
Phil Speer	9/12
Don Green	9/13
Alan Raymond	9/14
Chris Krumrey	9/14
Debbie Gerstner-Wolf	9/15
Jimmy Woolsey	9/16
Oscar Allen	9/20
David Whipkey	9/21
Daryl Page	9/22
Sheila Skov	9/25



What's Blooming



Aechmea 'Echidna'
- Cherie Lee



Aechmea chantinii Black - Edmonson



Tillandsia 'Sparkler' - C. Lee



Cryptanthus acaulis - Cinotto



Cryptanthus 'Dragon Fire' - Edmonson



Cryptanthus 'Jimmy Antle' - Cinotto



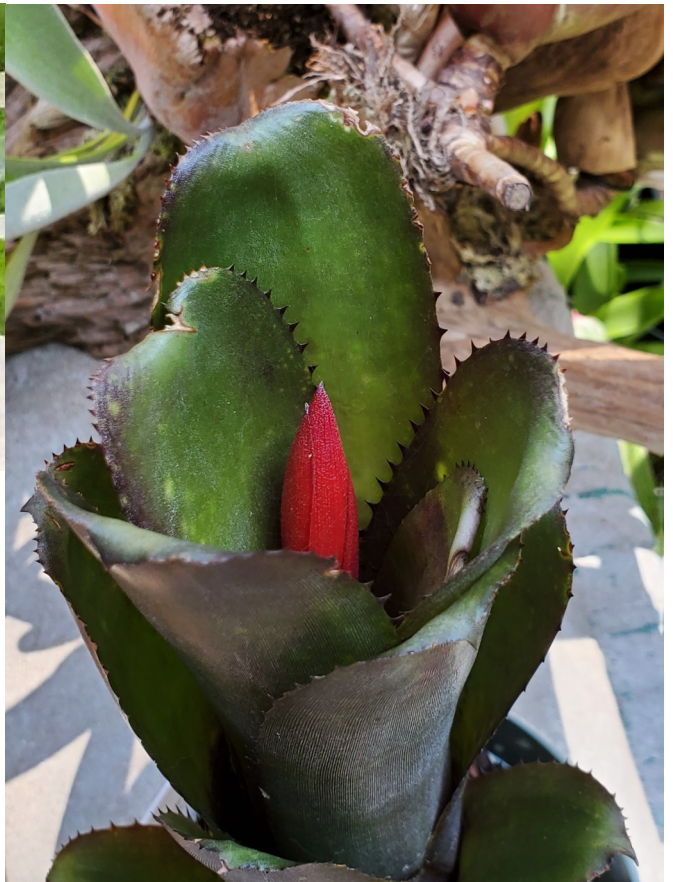
Cryptanthus 'Ruby Port' - Edmonson



Neoregelia 'Humbug' - Edmonson



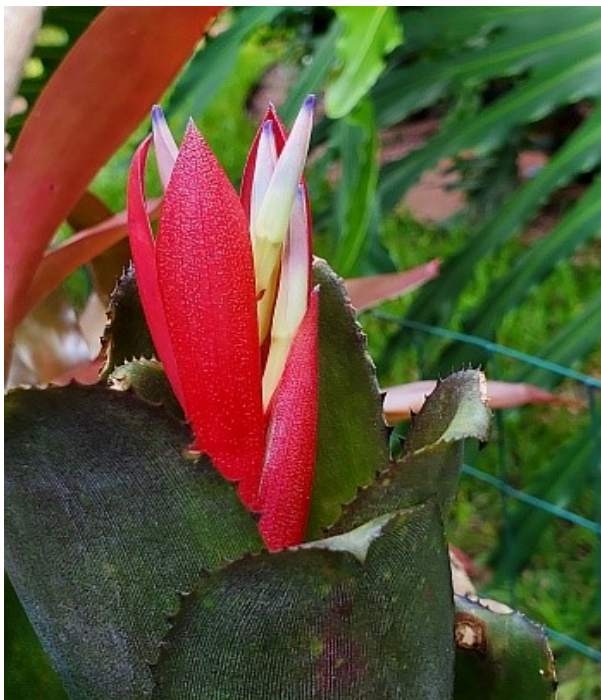
Nidularium fulgens - Lee



Billbergia 'Smokestack' - A. Baker



Cryptanthus 'San Antonio' - Edmonson



Billbergia 'Smokestack' - A. Baker



Tillandsia concolor 'Cuicatlan' - Edmonson



Forzzaea warasii - C. Richtmyer



Rokautskyia roberto-kautskyii
- C. Richtmyer



Cryptanthus 'Sweet Violet' - C. Richtmyer



Neoregelia x Sincoraea bi-generic hybrid,
'Super Nova' - R. Richtmyer



Vriesea 'Rosita' - Richtmyer

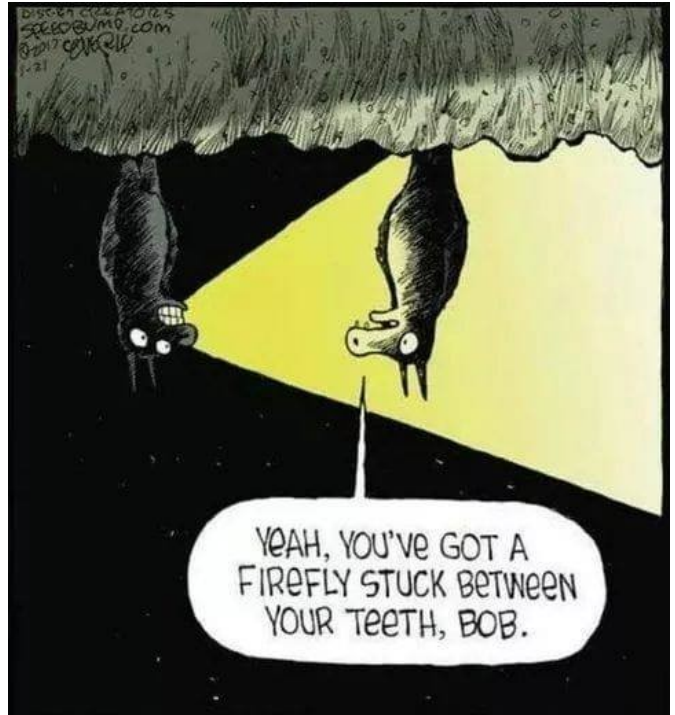


Pitcairnia tabuliformis - R. Richtmyer

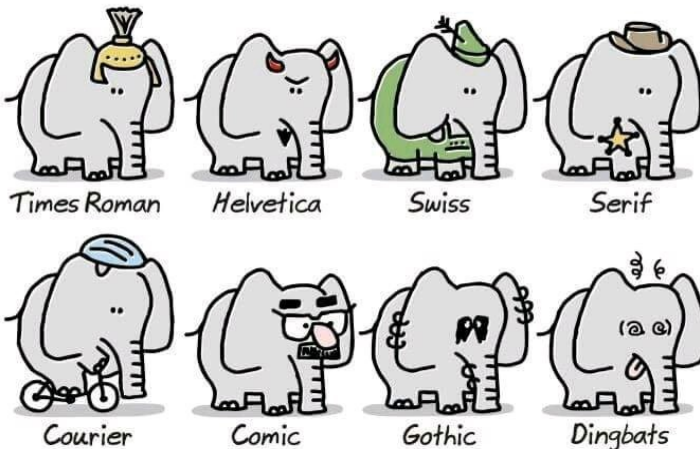
COVID RELIEF CENTER

Things will be better by August

August :



elefonts



A neighbor suggested I put horse manure on my strawberries. Tried it. I'm going back to whipped cream.

NEW: For the duration of Covid isolation only.

FOR SALE OR TRADE OR FREE TO GOOD HOME

This area is now being allocated for Buy, Sell, Trade or Free as we cannot do raffles or plant sales during this pandemic. We ask that you only include bromeliads or plant related items to sell or trade or give. No prices please. Transactions are to be negotiated between principals. Note: this is not a Bromeliad Society Houston process. This section is for members to allocate plants and plant related items in lieu of raffles or club plant sales.

Have your information as in the format below and send to mary@edmonsonphoto.com before the 10th of the month so we can include in the newsletter.

WHAT IS AVAILABLE:

We have a large variety of *Cryptanthus* and *Neoregelias* that anyone in the club is welcome to have. Free...to good home. Arrange with us to come by (with your mask) and pick out some.

CONTACT INFORMATION:

John Edmonson – 346-235-9005 or john@edmonsonphoto.com

WHAT IS AVAILABLE: *Tillandsia*, *Aechmea*, *Quesnelia* offsets for sale or trade.

CONTACT INFORMATION: Please call for list of available plants. John Schmidt @ 346-413-3227



WELCOME NEW MEMBER:

Seth Nicolas sethnicholas1112@gmail.com

Would like a bromeliad mentor, please.



Jimbo's Nursery

15019 8th St., Santa Fe, TX 77517, 409-925-6933

www.Jimbosnurserytx.com; email: Jimbos3@earthlink.net

We have a large selection of *Aechmea*, *Billbergia*, *Cryptanthus*, *Dyckia*, *Neoregelia*, and *Tillandsia*. Please compare our prices and our quality.

BROMELIAD SOCIETY/HOUSTON INC.



AFFILIATED WITH THE
BROMELIAD SOCIETY
INTERNATIONAL



MEMBER OF
SOUTHWEST BROMELIAD
GUILD



AFFILIATED WITH THE
CRYPTANTHUS SOCIETY INTERNATIONAL



About the Bromeliad Society/Houston

This corporation is organized exclusively for purely public charity and strictly educational purposes. Specific goals of the Society shall be to:

Increase knowledge of bromeliads through inter-change and dissemination of information.

Use such funds as are available for the purpose of research and/or equipment in institutions of higher learning within the State of Texas.

There are two classes of membership:

Individual	\$20.00 per year
Family	\$30.00 per year

All memberships begin with January of the current year.

Visit our website at www.bromeliadsocietyhouston.org for more information.

The Bulletin is published monthly and is available online prior to monthly meetings. Articles and any other information pertinent to bromeliads are solicited. Articles may be reprinted with proper acknowledgment given to author and publication.

Please have articles to the editor mary@edmonsonphoto.com before end of the month.

A Yearbook is published annually based on the membership roll at the end of the regular February meeting of each year and distributed to members of the BS/H, Inc.

Please address any correspondence regarding this publication to:

Mary Cinotto
16023 Pebble Bend Drive
Houston, TX 77068
mary@edmonsonphoto.com

Officers and Chairmen

President **Cherie Lee**
24672 Pine Ridge
Hockley, TX 77447
832-566-5786
cherie.d.lee@sbcglobal.net

Vice President **Linda Whipkey**
Secretary **David Whipkey**
Treasurer **Allyn Pearlman**
Past President **Don Green**

Board of Directors

	Term Expires	
12/31/20	12/31/21	12/31/22
Gordon Stowe	Vickey Gurka	Madge Donaldson
Shirl Stow	Frank Lee	Scherie Townes

I. **Standing Committees**

1. Publicity	Allyn Pearlman
2. Bulletin Editor	Mary Cinotto
3. Plant Sales Chairman	Allyn Pearlman
4. Programs Chairman	Linda Whipkey
5. Standing Committees	Ex-Officio Members: Don Green / Cherie Lee

II. **Committees of the Board Representatives**

1	Annual Show	David Whipkey
2	Bromeliad Culture	David Whipkey
3	Courtesy	Midge Gorman
4	Directory	Mary Cinotto
5	Email Communications	Mary Cinotto
6	Garden Tours	Gordon Stowe, Shirl Stowe
7	Historian	David Whipkey
8	Holiday Party Chairman	Allyn Pearlman
9	Hospitality Coordinator	Verna Powers
10	Members & Visitor Register:	Ken Gardner, Noreen Tolman
11	Membership	Allyn Pearlman
12	Raffle Plants	Cherie Lee, Frank Lee
13	Seedlings	Allyn Pearlman
14	Show & Tell	John Schmidt
15	Virtual Communications	Mike O'Neal
16	Webmaster	Joy Reynolds

Southwest Bromeliad Guild	David Whipkey, Ray Johnson
Bromeliad Society International	Annette Dominguez, Cherie Lee, Margo Racca

HOUSTON INC.



Bromeliad Society

Vol 53 No 8
August 2020

Mary Cinotto
16023 Pebble Bend Drive
Houston, TX 77068



FIRST CLASS