

President's View



Mike O'Neal

moneal37@gmail.com

Please join me in welcoming **Sheila Ross** as the newest member of our Board! We're excited to have her energy and ideas as we continue building momentum this year.

As I mentioned at our last meeting, I've been in discussions with a potential new webmaster. Our goal is to bring the **Bromeliad Society Houston website** more up to date and start catching up on our backlog of show photos, culture information, and more. The conversations are going well so far, and I'm optimistic about what's ahead. This new webmaster will also help us **keep the site current going forward**, making it a more useful resource for both members and visitors.

In our efforts to help everyone have **more fun with bromeliads**, we've been rolling out a number of exciting new activities—thanks in large part to our **Growth and Engagement Committee**. Here's a quick look at **what's coming up**:

President's View (continued)

Bromeliad Events Coming up:

PowerPoint Class
June 14 10am–2pm West
Grey (see page 4)

Farmer's Market Spring
Branch June 14, 9am-1pm
(see page 10)

ABC's
June 21 10am–2 pm West
Grey (see page 3)

Luncheon at Cheddar's
July 12 12:30 pm (see page
13)

INSIDE THIS ISSUE

June ABC's
Reminders
Summary of May Meeting
Cultural Tips
Bulletin Board
More News
ABC's
Dutch Lunch
Officers, Directors, Committees

President's View (continued)

□ **Jimbo's Nursery 50th Birthday Bash**

As I write this, I'm planning to attend the celebration at **Jimbo's Nursery**. I hope you were able to make it! It's always a joy to see so many bromeliads in one place—and to celebrate with music, food, and fellow plant lovers.

□ **Spring Branch Farmer's Market Booth**

Scherie Townes organized and is leading our booth at this bustling local market. It's a great way to reach a **new set of potential members** and show off the beauty and versatility of bromeliads in everyday life.

□ **ABCs Program with Crafts & Plant Info**

This four-part series was thoughtfully planned by **Gordon and Shirl Stowe**. It features hands-on learning through crafts and plant education—a fantastic way to engage both new and seasoned members.

□ **PowerPoint Class with Linda Whipkey**

Linda will be teaching a PowerPoint class designed to help members build confidence when creating presentations—perfect for anyone looking to share their passion for bromeliads more effectively.

□ **Upcoming Luncheon**

Linda Whipkey will be hosting our next member luncheon—a chance to relax, connect, and enjoy some bromeliad talk in good company.

□ Be sure to check **this bulletin** or the [BSH website](#) for **dates, times, and locations** of all upcoming activities.



All of this is coming up in just the next month or two! We're committed to trying new things that engage our current members and invite new ones into our vibrant community.

Thank you for supporting our mission to grow the bromeliad community. Whether you've been with us for years or just joined, we want you to feel connected, inspired, and part of something that's always growing.

Please **let us know how we're doing**—your feedback and ideas are always welcome!

Warm regards,
Mike O'Neal
moneal37@gmail.com

BROMELIAD SOCIETY/HOUSTON
2025 ABC's

**A COLLAGE OF IDEAS
&
A WEALTH OF INFORMATION**

Saturday, June 21, 10AM – 2PM

Members are cordially invited to participate in this year's ABC workshops to be held at:

Gray Multi Service Center
1475 W. Gray St. Houston, TX 77019

Concurrent sessions will be available for participants throughout the day,
AND
A wonderful Barbeque Brisket will be served for lunch.

10:00 AM – 11:30 AM

Creating Macrame Containers
By Linda Whipkey

OR ***Preparing and Judging Show plants***
By Cherie Lee & Don Green

11:30 AM – 12:30 PM

BBQ Brisket Lunch

(Please bring a side dish or dessert to share)

12:30 PM – 2:00 PM

Sketching Bromeliads
By Mary Cinotto

OR ***Identifying Unlabeled/ Unknown
Bromeliads***
(Bring plants or photos if you like.)
By Michael O'Neal

(All materials will be provided by BS/H with no cost to participants)



Example macrame hanger. Perfect
for a TILLANDSIA

Reminders

No Tuesday meeting in June.

Be at the Multi-Service center for June 21. The ABC's will be made up of workshops that you can attend (see page 3). It takes the place of a June meeting. 10 am to 2 pm. Barbeque lunch provided.

The PowerPoint Class is still on for June 14. Bring your laptop and a highlighter. You will be given a manual to keep (no charge). West Grey Multi-Service Center at 10 am

Deadline for bulletin articles and pictures for July is June 23. Send me those pictures of your broms.

XXXXXXXXXXXXXXXXXXXXXXXXXXXX

XXXXXXXXXXXXXXXXXXXXXXXXXXXX

May's Raffle

Winners:

Gretchen Fonteno

Vicky Gurka

Debbie Taylor

Patricia Buenaventura

Marianne Canevaro

Mitch Fontenot

Joanne Woolsey

Gordon Stowe

Shirl Stowe

Elayne Kouzounis

Audrey Van Wright

Donors: the Lee's, the Whipkey's , Mary Cinotto, Chris Nguyen, Malcolm McCorquedale, Mitch Fontenot, Gordon Stowe.

Raffle made \$140.

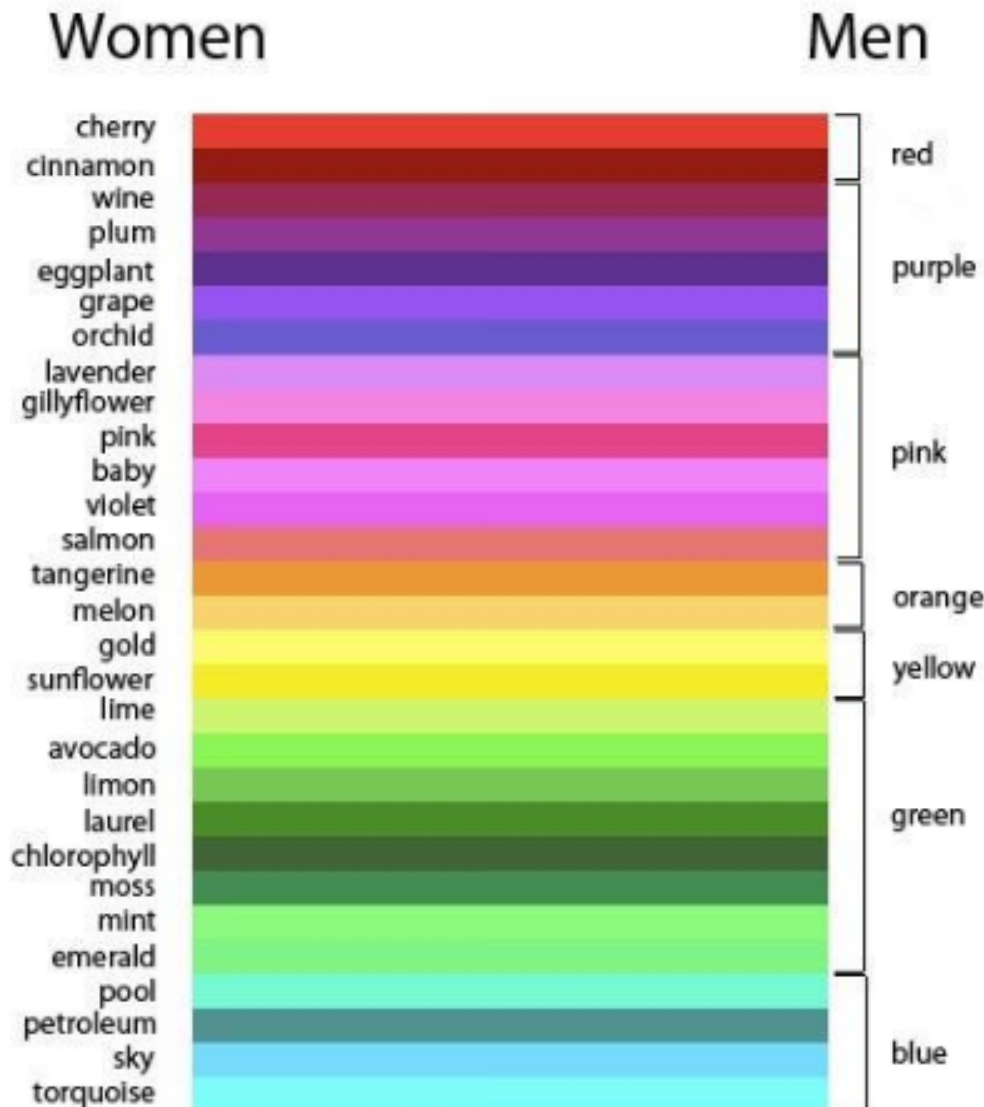
Thank you to all.

Summary of May's Meeting

Joanne and Jimmy Woolsey presented a summary of design principles used for landscaping. With her computer, Joanne showed several home spaces with different plants and bromeliads in the landscape. The results were stunning. Joanne took questions and comments after the presentation. Joanne included other plants in the landscape with the bromeliads to fulfill balance, symmetry, contrast and asymmetry.

Mitch Fontenot reminded us that most broms are epiphytes and can go easily into surrounding trees, resulting in "landscaping above."

Names of the Colors



Cultural Tips

Many years ago, I quietly listened while a group of wise individuals discussed what was wrong with Houston. One complained about traffic congestion, another mentioned overcrowding, still another railed against rude people. However, the discussion came to a quick end when someone simply said “June, July and August”.

For the most part the Bromeliads tolerate the heat and humidity quite well. Unfortunately, high temperatures and humidity can be dangerous for people. Be mindful of the heat. If you can, limit activities during the hottest parts of the day. Drink plenty of fluids. Cool off in an area where there is plenty of AC. Gardening is great fun, but it is not worth having a heat stroke.

During the hotter months, you need to observe your plants carefully. Watch for pests and diseases. If a problem is spotted early, it is usually much easier to solve. I mostly watch for slugs, grasshoppers, and scale. A less most common problem might be your neighbors’ livestock. Dogs, chickens, and goats can do quite a bit of damage to your plants. Good neighbors have good fences. Diseases such as bacterial leaf spot, root rot, stem rot, crown rot and fungal issues are sometimes problems. Most can be avoided by providing good air circulation, flushing the plants cups, and not over watering.

When the temperatures are hovering in the high 90s or low 100s, you might want to spend some time documenting your collection. Much of the work can be done inside where it is cool. Cull those pictures that you took of your plants. Keep the best and trash the rest. Now is a good time to verify that your plants are properly labeled. When in doubt, look it up.

While you are at it, carry out some research on any plants that are not thriving. You might be surprised what you can learn. The potted *Aechmea orlandiana* that has been looking a bit ratty might grow better for you if it was

mounted. The *Billbergias* that are a little spindly and never appear to bloom could need more light and a little fertilizer. Experiment a bit. You might kill a few plants, but while doing so, you might gain a lot of useful knowledge.

Most of all, take time to enjoy your collection. If it ain’t fun, why do it?



June Broms



Landscaping with Broms
At Elayne's (Kouzounis) home

June Broms



Neoregelia 'Serendipity Select'



Dyckia 'Lad Cutak'



Cryptanthus 'Anne Collings'

June Broms



***Tillandsia* 'Katy Kat'**
Seedling from last year



***Billbergia* 'Lots of Spots'**

Calling All Bromeliad Lovers ! ☐

Join Us at the Spring Branch Farmers Market – June 14

Bromeliad Society Houston will be hosting a booth at the **Spring Branch Farmers Market** on **Saturday, June 14**, and we'd love your help to make it a success!

- ☐ **Location:** St. Christopher Episcopal Church
- ☐ **Address:** 1656 Blalock Road, Houston, TX
- ☐ **Time:** 9:00 AM – 1:00 PM

We're looking to:

- **Showcase the beauty of bromeliads**
- **Attract new members (especially ages 20–40)**
- **Raise funds for future outreach**

How You Can Help

☐ **Donate Plants**

We're asking for **around 5 beginner-friendly plants** from genera like *Aechmea*, *Neoregelia*, *Tillandsia*, *Billbergia*, *Cryptanthus*, or *Dyckia*. Eye-catching and easy to care for is ideal!

- ☐ **Please coordinate with Scherie Townes as soon as possible** to arrange drop-off:

281-772-7556

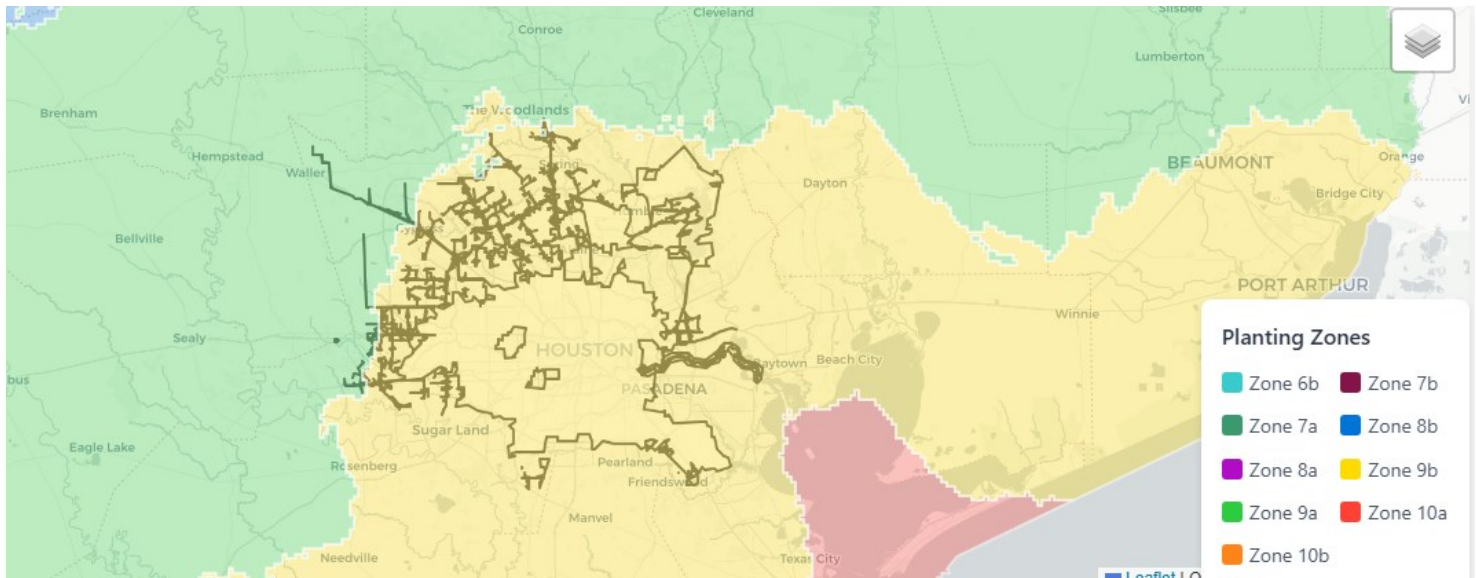
☐ **Volunteer at the Booth**

Love talking plants? Scherie could use a couple of extra hands at the booth. It's a great way to connect with fellow plant lovers and share your bromeliad enthusiasm.

Let's show the Spring Branch community how fun and fascinating bromeliads can be!

- ☐ **Thank you for supporting our mission to grow the bromeliad community.**

Houston: Growing Zone 9a and 9b Galveston is 10a



Find your growing zone by your zip code with this location:

<https://plantingzonesbyzipcode.com/>

Planting zones or the USDA Plant Hardiness Zones, are geographical areas **defined by average annual minimum winter temperatures**. These zones help you decide which plants are most likely to thrive in a your specific location across the state.

Houston has two Plant hardiness zones as listed for 2023. Zone 9a and 9b reflect a subtropical climate and Gulf Coast proximity.

In general, 9a starts in the north of the city with Spring Cypress Road and goes northward, including the Tomball, Magnolia and Conroe. The Woodlands sits on the border of the two zones. Houston itself is in 9b. To the south, The Bay area and Galveston are in Zone 10a.

Go to the web site and find your exact zone according to the winter temperature.

BULLETIN BOARD



JUNE BIRTHDAYS

Billie Emanuel	6/9
Sue P. John	6/4
Cherie Lee	6/1
Eddie Novak	6/24
Michael O'Neal	6/13
Sheila Ross	6/12
John Sarkisian	6/12
Gordon Stowe	6/17



We have a large selection of Aechmea, Billbergia, Cryptanthus, Dyckia, Neoregelia, and Tillandsia. Please compare our prices and our quality.

15019 8th Street West, Santa Fe, TX 77517 ■ 409-925-6933

www.jimbosnursery.com

Houston Orchid Society

www.houstonorchidsociety.org

Regular meeting first Thursday of month at 7:30 PM

First Christian Church | 1601 Sunset Blvd



Texas Gulf Coast Fern Society

www.tgcfersoc.org

Regular meeting third Sunday of month at 2:00 PM

Judson Robinson Jr. Community Center

2020 Hermann Drive., Houston, TX 77004



June 21 ABC's

The 2025 ABC's will be held at the West Grey facility. It will be composed of small workshops and it takes the



place of the June monthly meeting. One of the workshops will be a class in macrame, the art of tying knots. You will leave the class with your plant hanger fit for any brom or houseplant. Bring an empty 6

inch pot.

If you are interested in taking the class, let me know by sending me an email:

lindawhipkey@gmail.com



There will not be a meeting on the third Tues. of June.

ABC's takes its place on June 21 at the Multi-Service Center.



Houston Cactus and Succulent Society

www.hcsstex.org

Regular meeting fourth Wednesday of month at 7:00 PM

Metropolitan Multi-Service Center

1475 West Gray, Houston, TX 77019

Officers, Directors, Committees

PRESIDENT
Michael O'Neal

SECRETARY
Don Greene

VICE PRESIDENT
Gordon Stowe

TREASURER
Allyn Pearlman

PAST PRESIDENT
Scherie Townes

BOARD OF DIRECTORS-----

Through 2025
Frank Lee
Linda Whipkey

Through 2026
Vickey Gurka
Sheila Ross

Through 2027
Noreen Tolman
Malcolm McCorquodale

STANDING COMMITTEES-----

PUBLICATIONS
Allyn Pearlman

PROGRAM CHAIRMAN
Gordon Stowe

STANDING COMMITTEES EX-OFFICIO
Cherie Lee & Margo Racca

PLANT SALES CHAIRMAN
Allyn Pearlman

COMMITTEES -----

ANNUAL SHOW
Vickey Gurka

HOSPITALITY (TBD)

BROMELIAD CULTURE
David Whipkey

MEMBERSHIP
Allyn Pearlman

COURTESY
Debbie O'Neal

SEEDLINGS
Allyn Pearlman

DIRECTORY and BULLETIN
Linda Whipkey

SHOW AND TELL
John Schmidt

EMAIL COMMUNICATIONS
Linda Whipkey

RAFFLE
Cherie and Frank Lee

GARDEN TOURS
Gordon and Shirl Stowe

REGISTRATION
John Sarkisian

HISTORIAN
David Whipkey

ZOOM COMMUNICATION
Michael O'Neal

HOLIDAY PARTY CHAIRMAN
Allyn Pearlman

GROWTH AND ENGAGEMENT
Linda Whipkey

BROMELIAD SOCIETY INTERNATIONAL-----

Don Greene
Margo Racca

Cherie Lee
Daniel Wolf

More News

A Dutch Lunch (pay your own way)
will be held on July 12, 2025 at



Cheddars on the
290 West feeder
just before the
Barker Cypress
exit.

Get there around
12:30 pm.

Please RSVP with
Linda by June 28.

lindawhipkey@gmail.com

XXXXXXXXXXXXXXXXXXXXXXXXXXXXXXXXXXXXXXXXXXXXXXXXXXXXXXXXXXXX



Aechmea 'Fantasia'